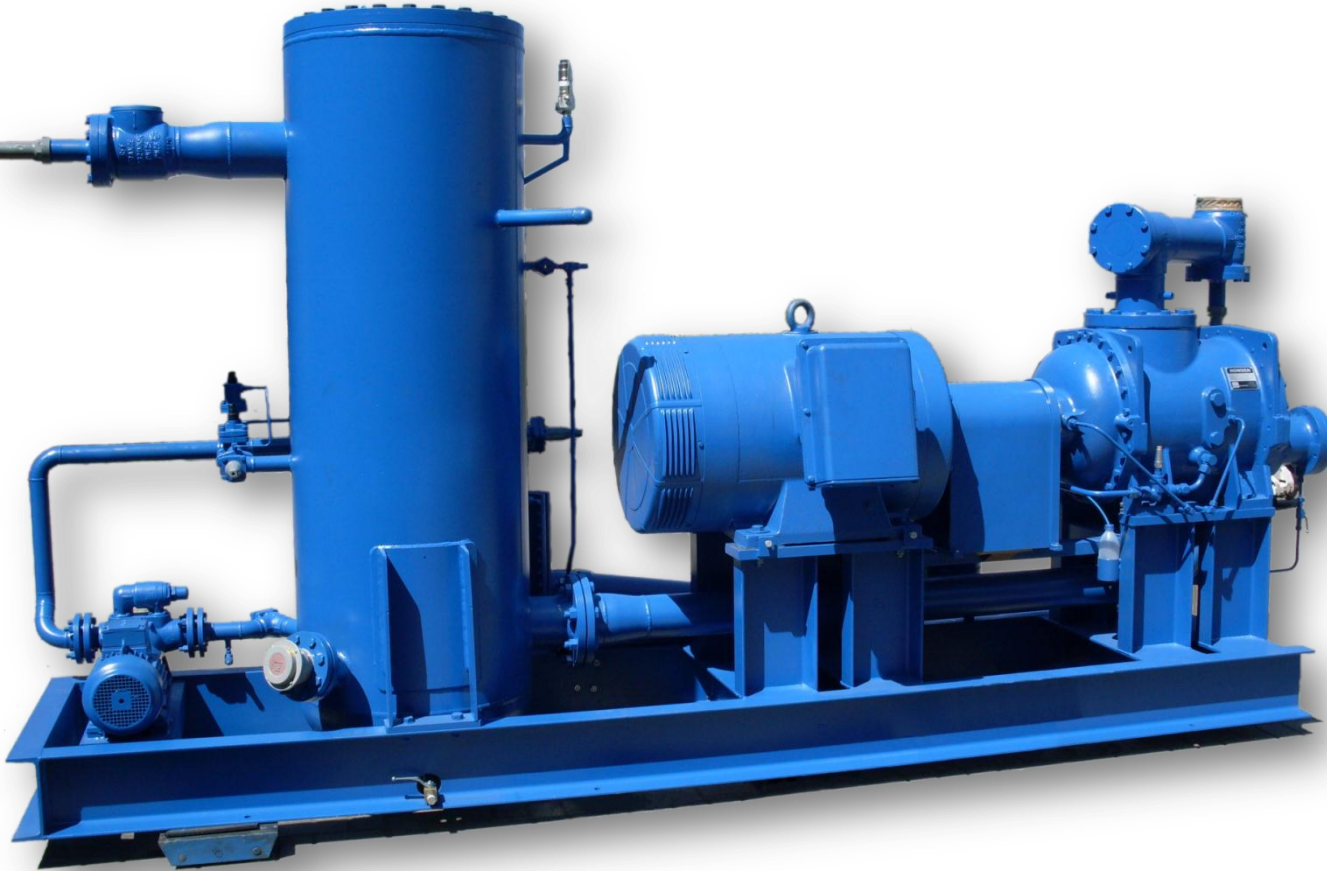


## Units based on Howden compressors. Complete range available!



RM Units are engineered and manufactured to meet the exact requirements of the industrial refrigeration industry.

All components assure reliability, accessibility and effectiveness. Our units are shipped completely assembled.

We guarantee maximum of:

- ✓ **Reliability and efficiency**
- ✓ **Safety**
- ✓ **Easy maintenance**



# RM Support Units



**HOWDEN WRV 163-145 50 on NH3 at 2950 rpm**

Evap./Cond: -35/+35 °C  
Open Flash Superfeed (SF connection) and Thermo-Syphon Oil Cooler  
Refrigeration Capacity kWR: 123  
Absorbed Power kW: 75.3

Available from: **€40000**

**HOWDEN WRV 163-180 50 on NH3 at 2950 rpm**

Evap./Cond: -35/+35 °C  
Open Flash Superfeed (SF connection) and Thermo-Syphon Oil Cooler  
Refrigeration Capacity kWR: 152  
Absorbed Power kW: 95.2

Available from: **€40000**

**HOWDEN WRV 204-110 50 on NH3 at 2950 rpm**

Evap./Cond: -35/+35 °C  
Open Flash Superfeed (SF connection) and Thermo-Syphon Oil Cooler  
Refrigeration Capacity kWR: 194  
Absorbed Power kW: 116

Available from: **€45000**

**HOWDEN WRV 204-145 50 on NH3 at 2950 rpm**

Evap./Cond: -35/+35 °C  
Open Flash Superfeed (SF connection) and Thermo-Syphon Oil Cooler  
Refrigeration Capacity kWR: 263  
Absorbed Power kW: 156

Available from: **€45000**

**HOWDEN WRV 204-165 50 on NH3 at 2950 rpm**

Evap./Cond: -35/+35 °C  
Open Flash Superfeed (SF connection) and Thermo-Syphon Oil Cooler  
Refrigeration Capacity kWR: 291  
Absorbed Power kW: 167

Available from: **€50000**

**HOWDEN WRV 204-193 50 on NH3 at 2950 rpm**

Evap./Cond: -35/+35 °C  
Open Flash Superfeed (SF connection) and Thermo-Syphon Oil Cooler  
Refrigeration Capacity kWR: 338  
Absorbed Power kW: 178

Available from: **€50000**

**HOWDEN WRVi 255-110 50 on NH3 at 2950 rpm**

Evap./Cond: -35/+35 °C  
Open Flash Superfeed (SF connection) and Thermo-Syphon Oil Cooler  
Refrigeration Capacity kWR: 390  
Absorbed Power kW: 216

Available from: **€60000**

**HOWDEN WRV 255-220 50 on NH3 at 2950 rpm**

Evap./Cond: -35/+35 °C  
Open Flash Superfeed (SF connection) and Thermo-Syphon Oil Cooler  
Refrigeration Capacity kWR: 781  
Absorbed Power kW: 432

Available from: **€60000**



**HOWDEN WRVi 255-130 50 on NH3 at 2950 rpm**

Evap./Cond: -35/+35 °C  
Open Flash Superfeed (SF connection) and Thermo-Syphon Oil Cooler  
Refrigeration Capacity kWR: 451  
Absorbed Power kW: 231

Available from: **€60 000**

**HOWDEN WRVi 255-145 50 on NH3 at 2950 rpm**

Evap./Cond: -35/+35 °C  
Open Flash Superfeed (SF connection) and Thermo-Syphon Oil Cooler  
Refrigeration Capacity kWR: 530  
Absorbed Power kW: 303

Available from: **€62 500**

**HOWDEN WRVi 255-165 50 on NH3 at 2950 rpm**

Evap./Cond: -35/+35 °C  
Open Flash Superfeed (SF connection) and Thermo-Syphon Oil Cooler  
Refrigeration Capacity kWR: 585  
Absorbed Power kW: 322

Available from: **€67 500**

**HOWDEN WRVi 255-193 50 on NH3 at 2950 rpm**

Evap./Cond: -35/+35 °C  
Open Flash Superfeed (SF connection) and Thermo-Syphon Oil Cooler  
Refrigeration Capacity kWR: 677  
Absorbed Power kW: 345

Available from: **€79 500**

**HOWDEN WRVi 321-132 50 on NH3 at 2950 rpm**

Evap./Cond: -35/+35 °C  
Open Flash Superfeed (SF connection) and Thermo-Syphon Oil Cooler  
Refrigeration Capacity kWR: 956  
Absorbed Power kW: 501

Available from: **€87 500**

**HOWDEN WRVi 321-165 50 on NH3 at 2950 rpm**

Evap./Cond: -35/+35 °C  
Open Flash Superfeed (SF connection) and Thermo-Syphon Oil Cooler  
Refrigeration Capacity kWR: 1195  
Absorbed Power kW: 650

Available from: **€95 000**

